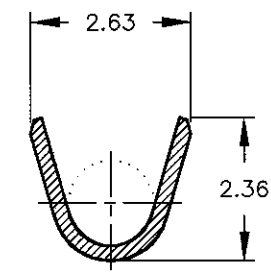
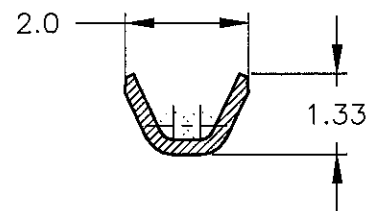


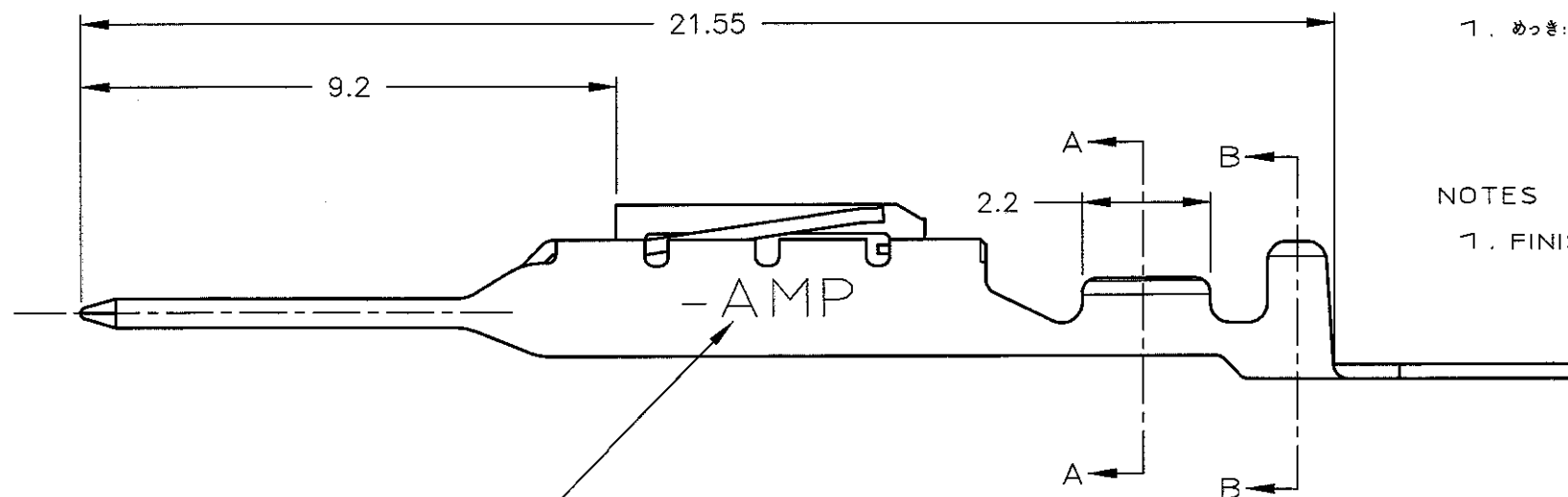
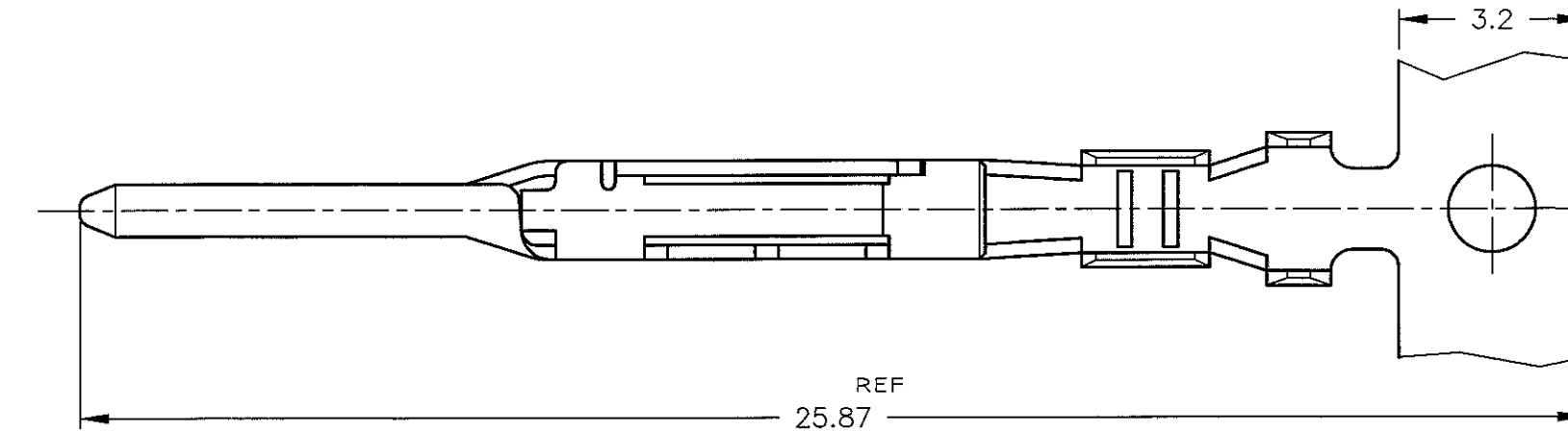
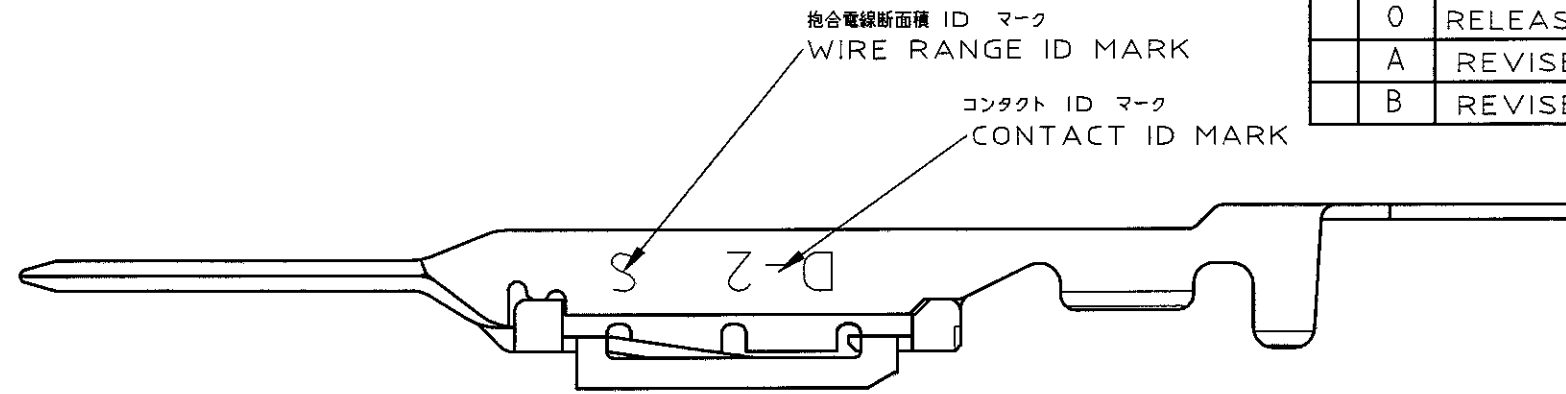
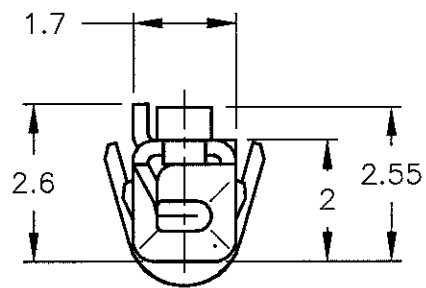
P	LTR	DESCRIPTION	ECN	DATE	DWN	APVD
	0	RELEASED	FJ00-1421-98	7/DEC/98	K.I.H.	H
	A	REVISED	FJ00-0931-99	1/JUN/99	K.I.H.	H
	B	REVISED	FJ00-2676-01	11/DEC/01	T.S.M.	H



断面 B-B
SECT B-B



断面 A-A
SECT A-A



AMP マーク
AMP MARK

-1:AS SHOWN
-1:本図

注記

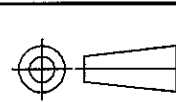
- 1. めっき: コンタクト: 全面Ni下地
接触部: 0.38μm MIN金めっき

NOTES

- 1. FINISH (CONTACT AREA): 0.38μm MIN GOLD PLATING OVER NI PLATING

THIS DRAWING IS A CONTROLLED DOCUMENT FOR AMP INCORPORATED. IT IS SUBJECT TO CHANGE AND THE CONTROLLING ENGINEERING ORGANIZATION SHOULD BE CONTACTED FOR THE LATEST REVISION.

DIMENSIONS:
単位: mm



MATERIAL
銅合金
(COPPER ALLOY)

TOLERANCES UNLESS OTHERWISE SPECIFIED

一般公差	10φ	±0.3
	30φ	>10 : ±0.35
	10φ	>30 : ±0.4
	ANGLE	±3°

FINISH
仕上
注記参照
SEE NOTE

DOWN 7/DEC/98
CHK K.IKEDA
7/DEC/98
N.MATSUBARA
APVD I.HASEGAWA
7/DEC/98
PRODUCT SPEC
108-5619
APPLICATION SPEC
114-5258
WEIGHT
CUSTOMER DRAWING

WIRE RANGE 抱合電線断面積 AWG #28~#24		INSULATION DIA 被覆外径 0.88~1.5	
AMP Tyco Electronics AMP K.K Kawasaki, Japan			
NAME 名称 TAB CONTACT "S" SIZE <DYNAMIC D-2 SERIES>			
SIZE A3	CAGE CODE 00779	DRAWING NO 1318110	RESTRICTED TO -
SCALE 尺 8-1		SHEET 1 OF 1 REV B	